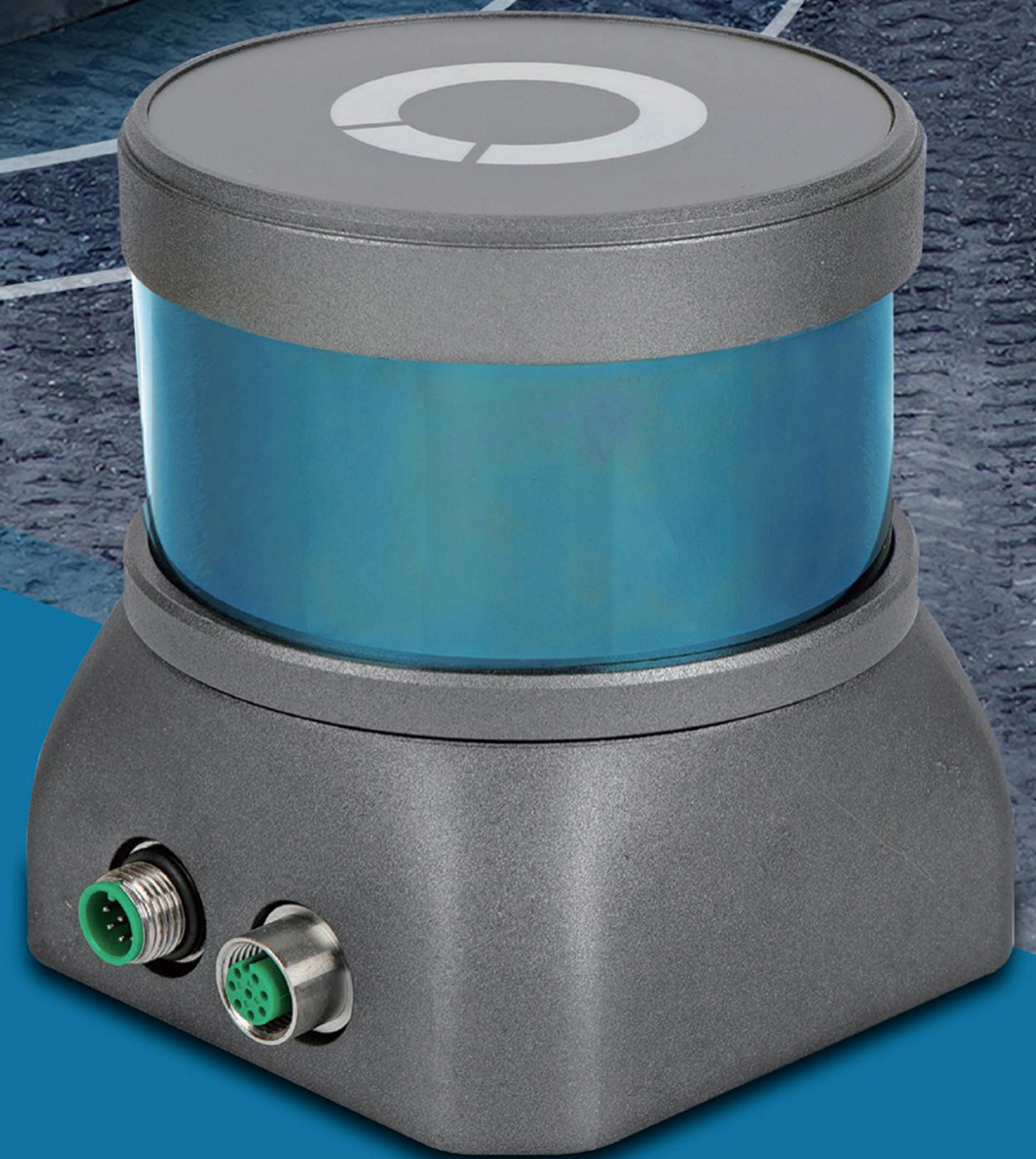


Multi-Line Mine-used Intrinsic Safety LiDAR



- Multi-Line Mine-used Intrinsic Safety LiDAR is widely used in various aspects such as 3D modeling of various working faces and roadways in the underground environment, obstacle avoidance of mining mobile equipment, deformation monitoring of mine roadways, displacement monitoring of mine slopes, and coal measurement, providing guarantee for positioning, navigation, obstacle avoidance, monitoring, measurement, etc.
- This product has obtained the mining product safety sign certificate and the explosion-proof conformity certificate issued by the China Mining Product Safety Approval and Certification Center Co., Ltd.



Security monitoring



Industrial automation



Unmanned vehicle



Mapping & Measurement



Mine-used Intrinsically Safe Radar Level Sensor

Specification table

Item	Unit	Specification
Laser wavelength	nm	905
Laser safety level		1(IEC-60825-1:2014)
Safety sign No.		MFB210030
Beam divergence	mrad	3
Returns		Single(Strongest, first)
Laser channels		16
Field of view(horizontal)	°	360
Scanning frequency	Hz	5 or 10
Field of view(Vertical)	°	-15°~+15°
Angle resolution (vertical)	°	2° (No 0° Line)±0.1°
Angle resolution (horizontal)	°	0.18°±10%@10Hz
Working distance	m	100m@80%wb
Range resolution ratio	mm	2
Accuracy	mm	Absolute accuracy: ≤±5cm , Repeat accuracy: ≤±3cm
Point cloud density	pts	About 310,000
Ethernet connection		100M Ethernet
UDP Packets contain		Distances Rotation Angles Calibrated Reflectivities Synchronized Time Stamps
Reflectivity data		5-100%
High reflector recognition		YES
Connection		2 8pin aviation plugs
Mechanical dimensions	mm	96(D)* 110(H)
Operating voltage	V DC	Power1: 8-14V Power2:14-17V Power3:14-17V
Power consumption	W	≤11
Weight	g	<1500g
Degree of protection		IP66
Operating temperature	°C	-10~50
Storage temperature	°C	-20~60
Ambient light limit	LUX	< 80000
Air humidity	RH	<95% (non-condensing)
Mounting		Bottom
EMC		IEC 61000-6-2:2016-08 /IEC 61000-6-3:2006-07
Vibration resistance		IEC 60068-2-6:2007
Shock resistance		IEC 60068-2-27:2008

Outline and mounting

